

检测报告

编号: CANEC2220988502

日期: 2022年10月18日 第1页,共11页

客户名称: 乐山希尔电子股份有限公司
 客户地址: 四川省乐山市高新区南新路9号

样品名称: 灌封整流桥
 型号: S35VB100
 客户参考信息: 见备注
 买家: 美的
 料号: 11201418000049

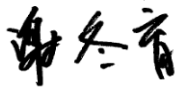
以上样品及信息由客户提供。

SGS工作编号: 10019316 - CQ
 样品接收日期: 2022年09月29日
 检测周期: 2022年09月29日 - 2022年10月17日
 检测要求: 根据客户要求检测
 检测方法: 请参见下一页
 检测结果: 请参见下一页

检测结果概要:

检测要求	结论
欧盟RoHS指令2011/65/EU附录II的修正指令(EU) 2015/863和客户要求-铅, 汞, 镉和六价铬	符合
欧盟RoHS指令2011/65/EU附录II的修正指令(EU) 2015/863和客户要求-铅, 汞, 镉, 六价铬, 多溴联苯(PBBs), 多溴二苯醚(PBDEs), 邻苯二甲酸二丁酯 (DBP), 邻苯二甲酸丁苄酯(BBP), 邻苯二甲酸二(2-乙基己基)酯(DEHP)和邻苯二甲酸二异丁酯(DIBP)	符合

通标标准技术服务有限公司广州分公司
 授权签名



Dongyu Xie 谢冬育
 批准签署人

scan to see the report



20572130



检测报告

编号: CANEC2220988502

日期: 2022年10月18日 第2页,共11页

检测结果:

检测样品描述:

样品编号	SGS样品ID	描述
SN1	CAN22-209885.001	黑色塑料
SN2	CAN22-209885.002	黑色物料
SN3	CAN22-209885.003	银色金属
SN4	CAN22-209885.004	银色金属脚
SN5	CAN22-209885.005	带焊锡和芯片的铜色金属

备注:

- (1) 1 mg/kg = 0.0001%
- (2) MDL = 方法检测限
- (3) ND = 未检出 (< MDL)
- (4) "-" = 未规定

欧盟RoHS指令2011/65/EU附录II的修正指令(EU) 2015/863和客户要求-铅, 汞, 镉和六价铬

检测方法: 参考IEC 62321-4:2013+A1:2017, IEC 62321-5:2013 和 IEC 62321-7-1:2015, 采用ICP-OES和UV-Vis 进行分析。

检测项目	限值	单位	MDL	003	004	005
镉 (Cd)	75	mg/kg	2	ND	ND	ND
铅 (Pb)	600	mg/kg	2	13	43	75090▲
汞 (Hg)	600	mg/kg	2	ND	ND	ND
六价铬(Cr(VI))▼	-	µg/cm ²	0.10	ND	ND	ND

备注:

- (1) 限值由客户提供。
- IEC 62321系列等同于 EN 62321 系列
- (2) ▼=a. 当六价铬的浓度高于0.13 µg/cm²时, 样品为阳性, 即含有六价铬;
 - b. 当六价铬的浓度为ND(低于0.10 µg/cm²)时, 样品为阴性, 即未检测到六价铬;
 - c. 当六价铬的浓度介于0.10 µg/cm²与0.13 µg/cm²之间时, 无法直接判定是否检测到六价铬, 因不同个体的样品表面差异可能会影响测定结果;
 由于未获知样品的存储条件和生产日期, 样品的六价铬检测结果仅能代表检测时样品含六价铬的状态。

欧盟RoHS指令2011/65/EU附录II的修正指令(EU) 2015/863和客户要求-铅, 汞, 镉, 六价铬, 多溴联苯(PBBs), 多溴二苯醚(PBDEs), 邻苯二甲酸二丁酯 (DBP), 邻苯二甲酸丁苄酯(BBP), 邻苯二甲酸二(2-乙基己基)酯(DEHP)和邻苯二甲酸二异丁酯(DIBP)



Unless otherwise agreed in writing, this document is issued by the Company subject to its General Conditions of Service printed overleaf, available on request or accessible at <http://www.sgs.com/en/Terms-and-Conditions.aspx> and, for electronic format documents, subject to Terms and Conditions for Electronic Documents at <http://www.sgs.com/en/Terms-and-Conditions/Terms-e-Documents.aspx>. Attention is drawn to the limitation of liability, indemnification and jurisdiction issues defined therein. Any holder of this document is advised that information contained hereon reflects the Company's findings at the time of its intervention only and within the limits of Client's instructions, if any. The Company's sole responsibility is to its Client and this document does not exonerate parties to a transaction from exercising all their rights and obligations under the transaction documents. This document cannot be reproduced except in full, without prior written approval of the Company. Any unauthorized alteration, forgery or falsification of the content or appearance of this document is unlawful and offenders may be prosecuted to the fullest extent of the law. Unless otherwise stated the results shown in this test report refer only to the sample(s) tested.

检测报告

编号: CANEC2220988502

日期: 2022年10月18日 第3页,共11页

检测方法: 参考IEC 62321-4:2013+A1:2017, IEC 62321-5:2013, IEC 62321-7-2:2017, IEC 62321-6:2015和IEC 62321-8:2017, 采用ICP-OES, UV-Vis和GC-MS进行分析。

检测项目	限值	单位	MDL	001
镉 (Cd)	75	mg/kg	2	ND
铅 (Pb)	600	mg/kg	2	ND
汞 (Hg)	600	mg/kg	2	ND
六价铬(Cr(VI))	600	mg/kg	8	ND
多溴联苯之和(PBBs)	600	mg/kg	-	ND
一溴联苯	-	mg/kg	5	ND
二溴联苯	-	mg/kg	5	ND
三溴联苯	-	mg/kg	5	ND
四溴联苯	-	mg/kg	5	ND
五溴联苯	-	mg/kg	5	ND
六溴联苯	-	mg/kg	5	ND
七溴联苯	-	mg/kg	5	ND
八溴联苯	-	mg/kg	5	ND
九溴联苯	-	mg/kg	5	ND
十溴联苯	-	mg/kg	5	ND
多溴二苯醚之和(PBDEs)	600	mg/kg	-	ND
一溴二苯醚	-	mg/kg	5	ND
二溴二苯醚	-	mg/kg	5	ND
三溴二苯醚	-	mg/kg	5	ND
四溴二苯醚	-	mg/kg	5	ND
五溴二苯醚	-	mg/kg	5	ND
六溴二苯醚	-	mg/kg	5	ND
七溴二苯醚	-	mg/kg	5	ND
八溴二苯醚	-	mg/kg	5	ND
九溴二苯醚	-	mg/kg	5	ND
十溴二苯醚	-	mg/kg	5	ND
邻苯二甲酸二丁酯 (DBP)	600	mg/kg	50	ND
邻苯二甲酸丁苄酯(BBP)	600	mg/kg	50	ND
邻苯二甲酸二(2-乙基己基)酯(DEHP)	600	mg/kg	50	ND
邻苯二甲酸二异丁酯(DIBP)	600	mg/kg	50	ND

检测项目	限值	单位	MDL	002
镉 (Cd)	75	mg/kg	2	ND
铅 (Pb)	600	mg/kg	2	ND



Unless otherwise agreed in writing, this document is issued by the Company subject to its General Conditions of Service printed overleaf, available on request or accessible at <http://www.sgs.com/en/Terms-and-Conditions.aspx> and, for electronic format documents, subject to Terms and Conditions for Electronic Documents at <http://www.sgs.com/en/Terms-and-Conditions/Terms-e-Documents.aspx>. Attention is drawn to the limitation of liability, indemnification and jurisdiction issues defined therein. Any holder of this document is advised that information contained hereon reflects the Company's findings at the time of its intervention only and within the limits of Client's instructions, if any. The Company's sole responsibility is to its Client and this document does not exonerate parties to a transaction from exercising all their rights and obligations under the transaction documents. This document cannot be reproduced except in full, without prior written approval of the Company. Any unauthorized alteration, forgery or falsification of the content or appearance of this document is unlawful and offenders may be prosecuted to the fullest extent of the law. Unless otherwise stated the results shown in this test report refer only to the sample(s) tested.

Attention: To check the authenticity of testing / inspection report & certificate, please contact us at telephone: (86-755) 8307 1443, or email: CN.Doccheck@sgs.com

检测报告

编号: CANEC2220988502

日期: 2022年10月18日 第4页,共11页

检测项目	限值	单位	MDL	002
汞 (Hg)	600	mg/kg	2	ND
六价铬(Cr(VI))	600	mg/kg	8	ND
多溴联苯之和(PBBs)	600	mg/kg	-	ND
一溴联苯	-	mg/kg	5	ND
二溴联苯	-	mg/kg	5	ND
三溴联苯	-	mg/kg	5	ND
四溴联苯	-	mg/kg	5	ND
五溴联苯	-	mg/kg	5	ND
六溴联苯	-	mg/kg	5	ND
七溴联苯	-	mg/kg	5	ND
八溴联苯	-	mg/kg	5	ND
九溴联苯	-	mg/kg	5	ND
十溴联苯	-	mg/kg	5	ND
多溴二苯醚之和(PBDEs)	600	mg/kg	-	ND
一溴二苯醚	-	mg/kg	5	ND
二溴二苯醚	-	mg/kg	5	ND
三溴二苯醚	-	mg/kg	5	ND
四溴二苯醚	-	mg/kg	5	ND
五溴二苯醚	-	mg/kg	5	ND
六溴二苯醚	-	mg/kg	5	ND
七溴二苯醚	-	mg/kg	5	ND
八溴二苯醚	-	mg/kg	5	ND
九溴二苯醚	-	mg/kg	5	ND
十溴二苯醚	-	mg/kg	5	ND
邻苯二甲酸二丁酯 (DBP)	600	mg/kg	50	ND
邻苯二甲酸丁苄酯(BBP)	600	mg/kg	50	ND
邻苯二甲酸二(2-乙基己基)酯(DEHP)	600	mg/kg	50	ND
邻苯二甲酸二异丁酯(DIBP)	600	mg/kg	50	ND

备注:

(1)限值由客户提供。IEC 62321 系列等同于 EN 62321 系列

(2) 2021年7月22号开始, DEHP, BBP, DBP 和 DIBP 的限制适用于医疗器械, 包括体外医疗器械, 监控仪表, 包括工业监测和控制仪器。

备注▲: 根据客户提供的声明, 样品005中的铅(Pb)被欧盟RoHS指令2011/65/EU豁免, 相应豁免条文(请以英文原文为准) [ANNEX III 7(a)]: 高熔点型焊料中的铅(即铅含量等于或大于85%的铅基合金焊料)。

除非另有说明, 参照ILAC-G8:09/2019, 使用简单接受 ($w=0$) 的二元判定规则进行符合性判定。



Unless otherwise agreed in writing, this document is issued by the Company subject to its General Conditions of Service printed overleaf, available on request or accessible at <http://www.sgs.com/en/Terms-and-Conditions.aspx> and, for electronic format documents, subject to Terms and Conditions for Electronic Documents at <http://www.sgs.com/en/Terms-and-Conditions/Terms-e-Documents.aspx>. Attention is drawn to the limitation of liability, indemnification and jurisdiction issues defined therein. Any holder of this document is advised that information contained hereon reflects the Company's findings at the time of its intervention only and within the limits of Client's instructions, if any. The Company's sole responsibility is to its Client and this document does not exonerate parties to a transaction from exercising all their rights and obligations under the transaction documents. This document cannot be reproduced except in full, without prior written approval of the Company. Any unauthorized alteration, forgery or falsification of the content or appearance of this document is unlawful and offenders may be prosecuted to the fullest extent of the law. Unless otherwise stated the results shown in this test report refer only to the sample(s) tested.

Attention: To check the authenticity of testing / inspection report & certificate, please contact us at telephone: (86-755) 8307 1443, or email: CN.Doccheck@sgs.com

检测报告

编号: CANEC2220988502

日期: 2022年10月18日 第5页,共11页

除非另有说明,此报告结果仅对检测的样品负责。本报告未经本公司书面许可,不可部分复制。
检测报告仅用于客户科研、教学、内部质量控制、产品研发等目的,仅供内部参考。



SGS-CSTC Standards Technical Services Co., Ltd.
Guangzhou Branch Testing Center Chemical Laboratory.

Unless otherwise agreed in writing, this document is issued by the Company subject to its General Conditions of Service printed overleaf, available on request or accessible at <http://www.sgs.com/en/Terms-and-Conditions.aspx> and, for electronic format documents, subject to Terms and Conditions for Electronic Documents at <http://www.sgs.com/en/Terms-and-Conditions/Terms-e-Documents.aspx>. Attention is drawn to the limitation of liability, indemnification and jurisdiction issues defined therein. Any holder of this document is advised that information contained hereon reflects the Company's findings at the time of its intervention only and within the limits of Client's instructions, if any. The Company's sole responsibility is to its Client and this document does not exonerate parties to a transaction from exercising all their rights and obligations under the transaction documents. This document cannot be reproduced except in full, without prior written approval of the Company. Any unauthorized alteration, forgery or falsification of the content or appearance of this document is unlawful and offenders may be prosecuted to the fullest extent of the law. Unless otherwise stated the results shown in this test report refer only to the sample(s) tested.

Attention: To check the authenticity of testing / inspection report & certificate, please contact us at telephone: (86-755) 8307 1443, or email: CN.Doccheck@sgs.com

198 Kezhu Road, Sciencetech Park Guangzhou Economic & Technology Development District, Guangzhou, China 510663

中国·广州·经济技术开发区科学城科珠路198号 邮编: 510663

t (86-20) 82155555 www.sgsgroup.com.cn

t (86-20) 82155555 sgs.china@sgs.com

备注:

S Series, Model S, followed by 15,25,35,50,60,75, followed by VB,BL , followed by 05,10,20,40,60,80,100,120,140,160, maybe followed by W,Z,A, L,X,WC, WB ,DT ST Series, Model ST, followed by 15,25,35,50,55,60,75, followed by 02.04,06,08, 10,12,14,16, 18,maybe followed by W,M,K,WL,A.D,L,S
SGBPC Series, Model SGBPC, followed by 15,25,35,50,60,75, followed by 02.04, 06,08,10,12,14,16,18 KBPC Series, Model KBPC, followed by 4,6,8,10,15,25,35, 50,60,75, followed by 02.04,06,08,10,12,14,16,18, maybe followed by A
GBPC Series,ModelGBPC, followed by 4,6,8,10,15,25,35,50,60,75, followed by 02.04,06,08,10,12,14,16,18,maybe followed by D,L, Z,W,A,ZL,WS,WD,WC,WL, WF,WFL MDD Series, Model MDD, followed by 50,60, 70,80,90,100,110,120,140, 150,160, 180,200, followed by A, followed by 60,80,100,120,140,160,180,200,250
MT3516M,2CZ1506
2CZ2001/02/04/06/08/10/812/14/16 2CZ1501/02/04/06/08/10/812/14/16
2CZ1001/02/04/06/08/10/812/14/16 2CZ801/02/04/06/08/10/812/14/16 2CZ601/
02/04/06/08/10/812/14/16 W06/08/10/12/14/16(G)、 2W06/08/10/12/14/16(G)
MTP3516A1、 MTP5016A1、 MDQ50-06
MDQ Series, Model MDQ followed by 50, followed by 06
MTP Series, Model MTP, followed by 35. 50 followed by 16, followed by A1
MDS Series.Model MDS
30.40.50.60.70.75.80.90.100.120.150.160.200.250.300.350.400.500.600.followed by
AB.BB.CB.DB.EB.FB.GB.HB.IB.JB.KB followed by
60.70.80.90.100.120.140.160.180.200.220.250.300.400 maybe followed by A.B.C.D.E.F.G
MDC/120/130/140/150/160BB80/100/120/160/180/200 MDC30/60/90CB80/120/160/180
MDD70/90/110/120/140/150/160/200A80/100/120/160/180/200
MFDD100/200/300A20/30/40 MFDB50/60/75/80/100A20/30/40/60 B
MFDB50/60/75/80/100A20/30/40/60 C MFDD160/200/240/300/360/400A/K/Z30/40/60

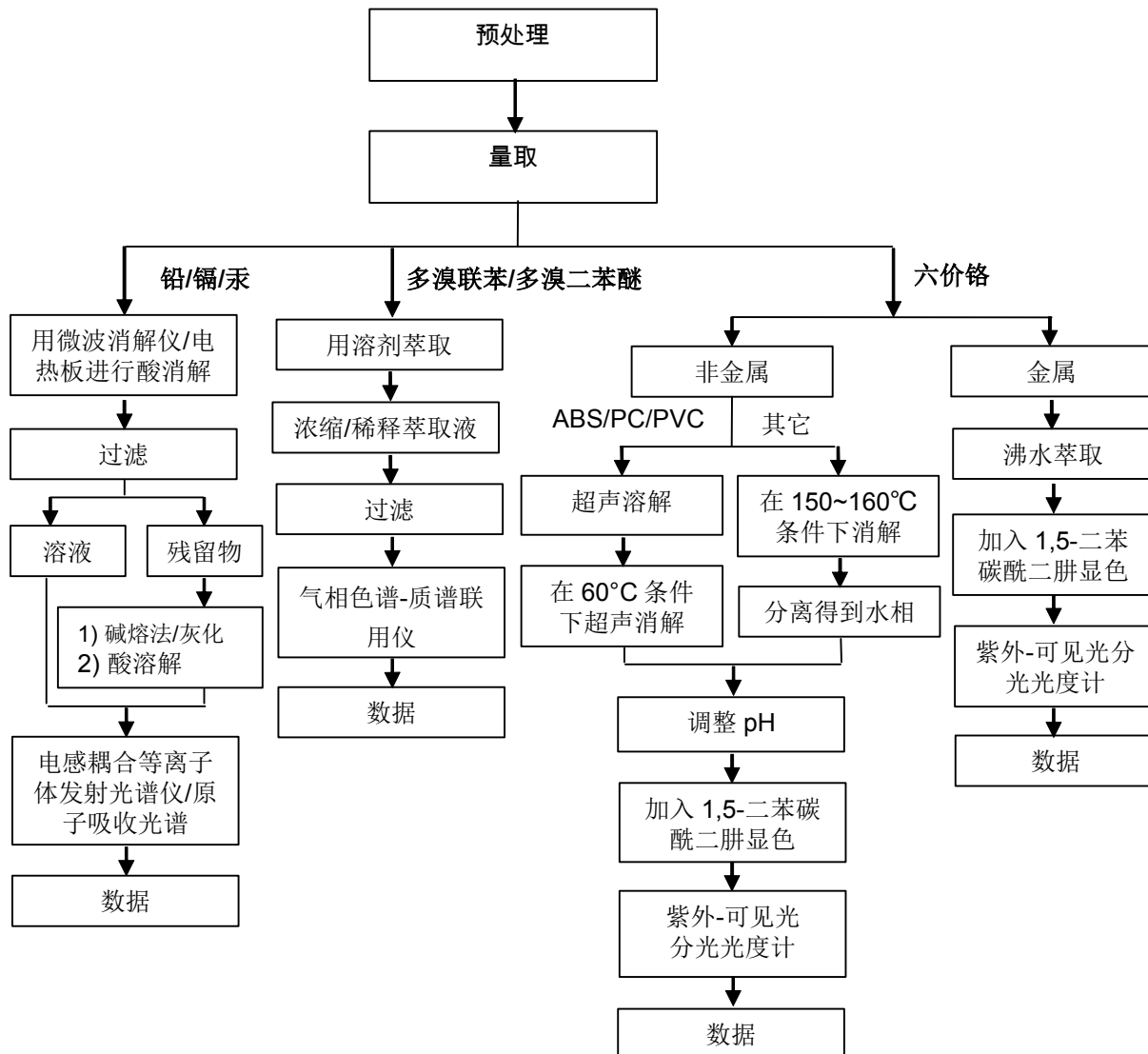


Unless otherwise agreed in writing, this document is issued by the Company subject to its General Conditions of Service printed overleaf, available on request or accessible at <http://www.sgs.com/en/Terms-and-Conditions.aspx> and, for electronic format documents, subject to Terms and Conditions for Electronic Documents at <http://www.sgs.com/en/Terms-and-Conditions/Terms-e-Documents.aspx>. Attention is drawn to the limitation of liability, indemnification and jurisdiction issues defined therein. Any holder of this document is advised that information contained hereon reflects the Company's findings at the time of its intervention only and within the limits of Client's instructions, if any. The Company's sole responsibility is to its Client and this document does not exonerate parties to a transaction from exercising all their rights and obligations under the transaction documents. This document cannot be reproduced except in full, without prior written approval of the Company. Any unauthorized alteration, forgery or falsification of the content or appearance of this document is unlawful and offenders may be prosecuted to the fullest extent of the law. Unless otherwise stated the results shown in this test report refer only to the sample(s) tested.
Attention: To check the authenticity of testing /inspection report & certificate, please contact us at telephone: (86-755) 8307 1443, or email: CN.Doccheck@sgs.com

附件

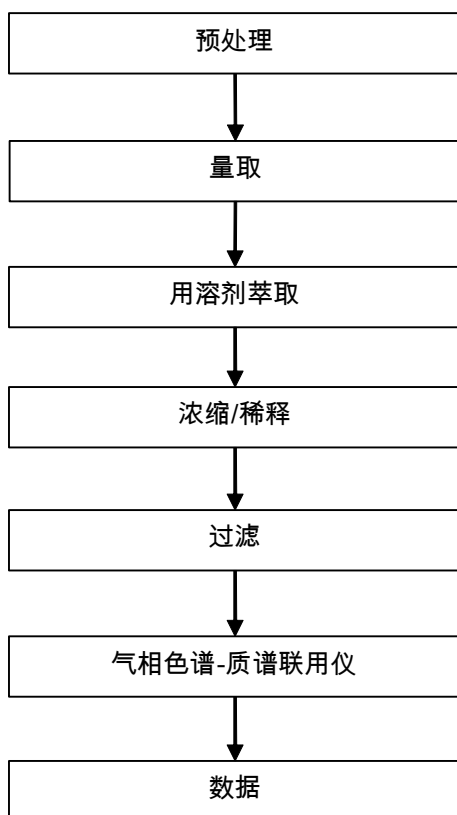
Pb/Cd/Hg/Cr⁶⁺/PBBs/PBDEs 检测流程图

1) 样品按照下述流程被完全消解（六价铬和多溴联苯/多溴二苯醚检测除外）。



附件

Phthalates 检测流程图



Unless otherwise agreed in writing, this document is issued by the Company subject to its General Conditions of Service printed overleaf, available on request or accessible at <http://www.sgs.com/en/Terms-and-Conditions.aspx> and, for electronic format documents, subject to Terms and Conditions for Electronic Documents at <http://www.sgs.com/en/Terms-and-Conditions/Terms-e-Documents.aspx>. Attention is drawn to the limitation of liability, indemnification and jurisdiction issues defined therein. Any holder of this document is advised that information contained hereon reflects the Company's findings at the time of its intervention only and within the limits of Client's instructions, if any. The Company's sole responsibility is to its Client and this document does not exonerate parties to a transaction from exercising all their rights and obligations under the transaction documents. This document cannot be reproduced except in full, without prior written approval of the Company. Any unauthorized alteration, forgery or falsification of the content or appearance of this document is unlawful and offenders may be prosecuted to the fullest extent of the law. Unless otherwise stated the results shown in this test report refer only to the sample(s) tested.

Attention: To check the authenticity of testing / inspection report & certificate, please contact us at telephone: (86-755) 8307 1443, or email: CN.Doccheck@sgs.com

检测报告

编号: CANEC2220988502

日期: 2022年10月18日

第9页,共11页

样品照片:







此照片仅限于随SGS正本报告使用

*** 报告结束 ***

